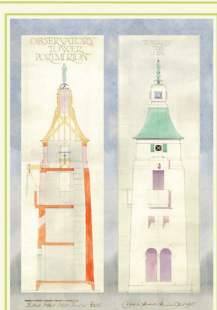




## Coctels / Cocktails

<b>Kir Royal</b> Siampaen gyda joch o Crème de cassis / Champagne with a dash of Crème de cassis	8.50
<b>Bellini</b> Prosecco a sudd eirin gwlanog / Prosecco with peach nectar	7.50
<b>Martini</b> Fodca neu Jin Aberhonddu a Noilly Prat / Brecon Vodka or Brecon Gin, Noilly Prat, lemon rind	7.50
<b>Spritzer Jin Pinc / Pink Gin Spritz</b> Jin pinc, Prosecco, lemonêd, mafon a mefus / Pink gin, Prosecco, Lemonade, strawberries and raspberries	7.50
<b>Margarita Las / Blue Margarita</b> Tecila, Curaçao glas, sudd lemon, surop siwgwr / Tequila, blue Curaçao, lemon juice, sugar syrup	7.50
<b>Gosteg y Castell / Castle Calmer</b> Jin, Cointreau, sudd oren, sudd leim, Grenadine / Gin, Cointreau, orange juice, lime juice, Grenadine	7.50
<b>Piña Colada</b> Bacardi, pîn-afal, sudd oren, leim, cnau coco, / Bacardi, pineapple, fresh orange juice, lime, coconut	7.50
<b>Daiquiri</b> Bacardi, sudd leim, surop siwgwr / Bacardi, lime juice and sugar syrup	7.50
<b>Mojito</b> Bacardi, leim, surop siwgwr, dail mintys, soda / Bacardi, lime, sugar surop, fresh mint, soda	7.50
<b>Espresso Martini</b> Fodca Aberhonddu, Kahula, joch o espresso / Brecon vodka, Kahlula, espresso shot	7.50
<b>Mari Waedlyd / Bloody Mary</b> Fodca Aberhonddu, sudd tomato, saws Caerwrangon, Tabasco, leim Brecon vodka, tomato juice, Worcestershire sauce, tabasco sauce, lime wedge	7.50
<b>Cosmopolitan</b> Fodca, Cointerau, sudd leim, llugaeron a lemwn / Brecon Vodka, Cointerau, lime, cranberry & lemon juice	7.50
<b>Llecyn glas / Oasis</b> Jin Aberhonddu, Curaçao glas, tonig / Gin, blue Curaçao, tonic	7.50
<b>Mul Mosgo / Moscow Mule</b> Fodca, sudd leim, diod sinsyr, chwerwon / Vodka, lime juice, Ginger Beer, bitters	7.50

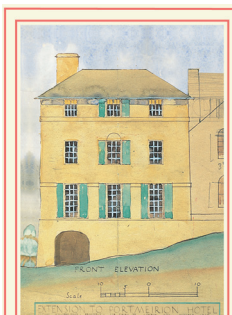


**PORTMEIRION**  
PINOT GRIGIO  
GARGANEGA  
VENETO

Gwin sych a ffres gydag arlliw o sitrws ac eirin gwlanog, mae'r blas yn gydnherth a dwys.

A fresh dry wine with hints of ripe citrus and white peach, the palate is rich and concentrated.

175ml		£5.50
250ml		£7.50
750ml		£22.00

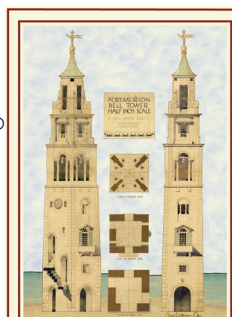


**PORTMEIRION**  
ROSÉ  
PAYS D'OC

Gwin ffrwythus braf sy'n gyforiog o arogleuon yr haf gyda blasau cynnil o fefus ac eirin duon.

An elegant, lightly fruity rosé with summer fruit aromas of strawberries and plums.

175ml		£5.50
250ml		£7.50
750ml		£22.00



**PORTMEIRION**  
MERLOT  
PAYS D'OC

Gwin cydnherth, melfedaidd gydag aroglau mwyrar duon a blas ceirios aeddfed ac eirin.

A soft, rich wine with elegant blackberry aromas and typical Merlot plum, cherry and dark fruit notes.

175ml		£5.50
250ml		£7.50
750ml		£22.00



**PORTMEIRION**  
SAUVIGNON  
BLANC  
NEW ZEALAND

Arogleuon ffrwythau trofannol a leim, gyda blas iachus a ffres ac asidrydd gloyw.

Passion fruit and lime underpinned by tropical fruit; bright acidity with a crisp finish.

175ml		£6.50
250ml		£9.00
750ml		£26.00

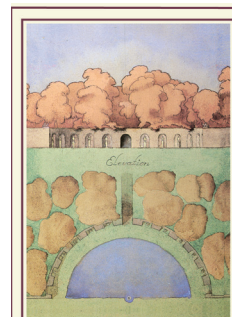


**PORTMEIRION**  
RIOJA  
DENOMINACION DE  
ORIGEN CALIFICADA

Rioja gloyw rhuddgoch yfadwy, blas aeron cochion aeddfed sbeislyd gydag arlliw o licris.

A bright cherry red colour with red berry & spice flavours & a hint of liquorice in an easy drinking style.

175ml		£6.50
250ml		£9.00
750ml		£26.00

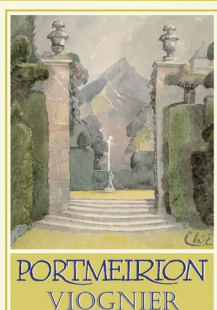


**PORTMEIRION**  
CLARED Y TY  
HOUSE CLARET  
BORDEAUX

Clasur o glared gyda blas aeron duon aeddfed a thanin ysgafn ar yr ôl-flas.

Classic claret, full bodied and juicy, full of ripe dark berry fruits with soft tannins on the finish.

175ml		£6.50
250ml		£9.00
750ml		£26.00

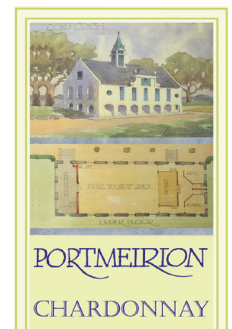


**PORTMEIRION**  
VIOGNIER  
PAYS D'OC

Blas ffres gydag aroglau sitrws, bricyll a ffrwythau gwynion.

Fresh tasting with aromas of citrus, apricot & white fruit.

175ml		£5.50
250ml		£7.50
750ml		£22.00

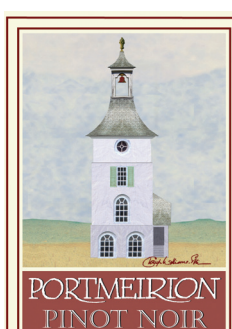


**PORTMEIRION**  
CHARDONNAY  
LOIRE

Blas blas eirin gwlanog ac afalau; strwythur cytbwys asidrydd ffres.

White peach, apple and quince flavours, well balanced with fresh lemony acidity.

175ml		£6.50
250ml		£9.00
750ml		£26.00



**PORTMEIRION**  
PINOT NOIR  
PAYS D'OC

Sidanaidd gydag aroglau ffrwythau cochion a cheirios

Smooth, well balanced Pinot Noir with red fruit aromas & cherry notes

175ml		£6.50
250ml		£9.00
750ml		£26.00

## Champagne

125ml

750ml

- |     |   |      |       |
|-----|---|------|-------|
| 100 | Palmer & Co, Montagne des Reims, NV, 12%<br>Blasau coeth o ffrwythau gwynion, gellyg, afalau a bricyll gydag arogleuon cynnil o fêl, cnau a bara crasu.<br>A rich, aromatic palate of white fruits, pear, apple and apricot, subtle with notes of honey, hazelnuts and brioche. | 8.00 | 46.00 |
| 101 | Palmer & Co, Montagne des Reims, NV, 12%, hanner potel (37.5ml) half bottle:  |      | 26.00 |
| 102 | Champagne PORTMEIRION, Duval Leroy, NV, 12%<br>Siampaen ffrwythus ac amheuthun gyda llawnder o swigod mân<br>Deliciously fruity with a rounded and refreshing style   | 9.50 | 56.00 |

## Prosecco

- |     |   |      |       |
|-----|---|------|-------|
| 106 | Vaporetto Prosecco NV, 11%<br>Gwin ffrwythus godidog â nodau o sitrws a blagur ceirios<br>Soft, fruity sparkling wine with citrus & floral notes              | 6.50 | 28.00 |
| 107 | Belstar Rosé NV, 11%<br>Gwin gwridog pefriog ffrwythlon braf gyda diweddglo hirymaros<br>Clean, easy style with a fruity finish and subtle floral persistence | 6.50 | 32.00 |

## Cava / Frizzante

- |     |  |      |       |
|-----|--|------|-------|
| 108 | Marques de Monistrol Cava Brut, NV 11%<br>Sionc, cytbwys a ffres gydag aroglau ffrwythus, asidrwydd cytbwys a swigod mân, pefriog<br>Very fresh and well-balanced. Fruity bouquet, balanced acidity and small sparkling bubbles                              | 6.50 | 32.00 |
| 109 | Rose Vino Frizzante, Fabio Ceschin, Italy 11%<br>Rose byrlymus wedi'i wneud o rawnwin raboso. Llawn blas mafon ffres gydag asidrwydd adfywiol.<br>Charming rosé made with 100% raboso grapes. Soft raspberry fruit, fresh on the palate, refreshing acidity. | 6.50 | 32.00 |



175ml 250ml 750ml

## Gwin Gwridog / Rosé Wine

401	PORTMEIRION Cinsault Rosé, IGP, 12.5%, Pays d'Oc Gwin ffrwythus braf sy'n gyforiog o arogleuon yr haf gyda blas cynnil mefus ac eirin An elegant, lightly fruity Provence rosé with summer fruit aromas of strawberries and plums	5.00	7.00	20.00
402	Wandering Bear Rose, Western Cape, 11%, De Affrica/S.A. Gwin arddull Zinfandel, blas mefus melys a mafon gydag arlliw o felon dŵr A Zinfandel style rosé with a red fruit palate, raspberries and a splash of water-melon	5.00	7.00	20.00
403	Amori Pinot Grigio Blush, Venezie IGT, 12%, Yr Eidal / Italy Rosé hawdd ei yfed gydag aroglau hyfryd o ffrwythau'r haf yn arwain at flas ffrwythau meddal. A very easy drinking rosé with fragrant summer fruits on the nose followed by a soft fruity palate.			25.00
404	Argento Malbec Rosé, Mendoza, 13.5%, Ariannin/Argentina Aromâu cryfion o aeron cochion ffres gyda llawder blas ceirios ar y tafod gyda mymryn o flas melon. Intense aromas of fresh red berries with concentrated cherry fruit flavours and a hint of melon.			29.00

## Gwin Melys / Pudding Wine

		125ml	750ml	
500	Afon Mêl Welsh Honey Mead, 12.5%, Cymru Medd hen ffasiwn, pur a blasus o ardal y Cei Newydd yng Ngheredigion Welsh fermented honey wine; a cider like palate, fresh tingle, light heather finish.	6.50		35.00
501	Moscatel de Setúbal, Bacalhôa, 17%, Portugal Gwin anghyffredin gyda blasau siocled a resins; llyfn a melys gyda diweddglo ffres a sych An unusual, complex wine with flavours of chocolate and raisins; smooth and sweet with a fresh, dry finish.	6.50		39.00
502	Els Pyreneus Muscat de Rivesaltes, 15%, Perpignan Aroglau grawnwin sbeis, arlliw o rosod a'r cyfan wedi ei gytbwysu'n berffaith Intense, fresh nose, spicy grape aromas, hints of roses, balanced by natural acidity	125ml 7.50	500ml	30.00
503	Maury Grenat Els Pyreneus, 15%, Languedoc-Rousillon Aromâu dwfn ffrwythau ffres yn cydbblethu gyda mefus, cassis a siocled. Intense, fresh fruit aromas blended with cassis, strawberries with chocolate.	8.75	500ml	35.00



## Gwin Gwyn / White Wine

175ml 250ml 750ml

- |     |   |      |      |       |
|-----|---|------|------|-------|
| 202 | Acacia Tree Chenin Blanc, 13%, De Affrica<br>Blasau sitrws ac eirin gwlanog gydag asidrwydd cynnil; torrwr syched tan gamp<br>Fresh citrus and peach flavours with zippy acidity and a refreshing finish  | 5.00 | 7.00 | 20.00 |
| 203 | Terre Forti Trebbiano Chardonnay, Emilia-Romagna, 2015<br>Arogleuon afalau ac eirin gwlanog, gwin sych a ffres llawn blas gellyg a sitrws.<br>A light aromatic wine with apple & peach notes, fresh, dry palate with pear and citrus fruit  | 5.00 | 7.00 | 20.00 |
| 204 | PORTMEIRION Pinot Grigio/Garganega, 12%, Venezia<br>Gwin sych a ffres gydag arlliw o sitrws ac eirin gwlanog, mae'r blas yn gydnerth a dwys.<br>A fresh dry wine with hints of ripe citrus and white peach, the palate is rich and concentrated.  | 5.50 | 7.50 | 22.00 |
| 205 | PORTMEIRION Viognier, IGP, 12.5%, Pays d'Oc<br>Gwin eurliw gyda gwawr werdd a blas ac aroglau sitrws, bricyll a ffrwythau gwynion.<br>A golden yellow wine with green tinges, fresh on the palate with aromas of citrus, apricot and white fruit.   | 5.50 | 7.50 | 22.00 |
| 206 | PORTMEIRION Chardonnay. Domaine des Herbauges, 12%, Loire<br>Gwin 'hen winwydd' llawn blasau eirin gwlanog ac afalau gyda strwythur cytbwys ac asidrwydd ffres.<br>This unoaked Chardonnay is full of white peach and apple flavours, well balanced with fresh lemony acidity.              | 6.50 | 9.00 | 26.00 |
| 207 | PORTMEIRION Sauvignon Blanc, Dry Hills, Marlborough, 12.5%,NZ<br>Arogleuon ffrwythau trofannol a leim, blas iachus a ffres gydag asidrwydd gloyw ac ôl-flas amheuthun<br>Passion fruit and lime aromas underpinned by tropical fruits with bright acidity and a crisp finish                | 6.50 | 9.00 | 26.00 |
| 208 | Picpoul de Pinet la Côte Flamenc, 12.5%, Languedoc Roussillon<br>Gwin cain a ffrwythus gyda blas sitrws trofannol a blagur y gwanwyn.<br>Fine and fruity reminiscence of citrus tropical fruits and spring flowers.   | 6.50 | 9.00 | 26.00 |
| 209 | Terra de Lobos Fernão Pires/Sauvignon Blanc, Casal Branco, Portugal<br>Arlliw o aroglau Muscat yn agor ar flas bricyll aeddfed. Campwaith blasus arall o dde Portiwgal.<br>A lovely spicy hint of Muscat on the nose followed by ripe apricot fruit on the palate. Well made and delicious. |      |      | 22.00 |

Gwinoedd fesul gwydraid ar gael ar fesur 125ml os dymunir / All wines by the glass also available in 125ml measures if required

175ml 250ml 750ml

## Gwin Gwyn / White Wine

- 210 The Spee'Wah Semillon Sauvignon Blanc, Murray Darling, Awstralia 25.00  
Gwin amheuthun gyda nodweddion glaswellt ffres a blas afalau gwyrdd.  
A refreshing wine with notes of cut grass and a green apple bite.
- 211 Las Pampas Chenin/Torrontés, Mendoza 25.00  
Cydbwysedd da rhwng y Chenin Blanc a'r Torrontes. Gwin ysgafn, esmwyth gyda chraidd o ffrwythau trofannol.  
Nice balance of Chenin Blanc and Torrontes grapes. Light-bodied with a succulent, soft, rounded tropical fruit core
- 212 El Tesoro Verdejo, Castilla Leon, Castilla León 22.00  
Aroglau ffrwythau trofannol gydag arlliw o sitrws. Gwin cytbwys gydag ôl-flas gloyw a ffres.  
Aromas of tropical fruit with hints of citrus and stone fruit notes. Well-balanced with a fresh, bright finish.
- 213 Muscadet de Sevre et Maine sur lie, Château du Poyet 25.00  
Aromâu a blasau afalau, gellyg, eirin gwlanog a ffigys. Ansawdd pefriol cywrain ac ôl-flas llaes.  
Aromas and flavours of apples, pears, peaches and figs. The texture has a delicate spritz and the finish is long
- 214 Freedom Cross Sauvignon Blanc, Western Cape, Franschoek Cellar 26.00  
Asidrwydd ffres ac aroglau ffrwythau melyn hafaidd gyda sylfaen mwnol ac arlliw o berlysiâu ar yr ôl-flas.  
Good crisp acidity with a bouquet of yellow summer fruit, a core of minerality with hints of herbs in the backdrop.
- 215 Jean Biecher & Fils Riesling, Saint Hippolyte, Alsace 26.00  
Mae i'r Riesling hwn strwythur a ffresni da gyda blas cywrain o ffrwythau sitrws ac asidedd sionc.  
This dry Riesling displays great structure and freshness, with delicate citrus fruits and a lively acidity.
- 216 Cave de Saumur 'Touraine' La Croix des Champs Sauvignon, Loire 28.00  
Mae'r gwin melyn golau hwn yn gytbwys ac amheuthun gyda nawws ffrwythau gwynion a blagur.  
This pale yellow wine is rich, well balanced, and delicious on the palate, with white fruit and white flower nuances.
- 217 Santa Ema Select Terroir Sauvignon Blanc, Maipo, 12%, Chile 29.00  
Blas ffrwythau trofannol, bywiog a ffres gyda strwythur cain ac arlliw mwnol.  
Masses of fresh tropical fruit flavours. Lively and zesty with good character and a touch of minerality.

## Gwin Coch / Red Wine

175ml 250ml 750ml

- |     |  |      |      |       |
|-----|--|------|------|-------|
| 301 | El Muro Tempranillo Garnacha, 12.5%, Sbaen<br>Gwin coch melfedaidd, ffrwythus gyda blas aeron tywyll ac arlliw o bupur du<br>This is a soft, fruity red with dark berry fruit and a just a twist of pepper on the finish   | 5.00 | 7.00 | 20.00 |
| 302 | The Old Press Shiraz, 13.5%, Awstralia<br>Gwin dwys llawn blas ffrwythau tywyll a'r tannin aeddfed yn rhoi llyfder braf i'r gwin<br>A deep, fruity red wine with plum and red berry flavours. Ripe tannins provide a super smooth texture  | 5.00 | 7.00 | 20.00 |
| 303 | Gable View Cabernet Sauvignon, 14%, De Affrica<br>Gwin sidanaidd o Dde Affrica gyda blas aeron duon a ffrwythau tywyll ac arlliw o sbeisiau melys<br>Quite light for a Cabernet Sauvignon, very fruit driven with a lighter, fresher character than most Cabernets               | 5.00 | 7.00 | 20.00 |
| 304 | Terre Forti Sangiovese, Emilia-Romagna<br>Sangiovese classurrol: blas ceirios a mafon ffres gyda thanin aeddfed a thonnau o asidrwydd adfywiol.<br>Classic Sangiovese character: crisp cherry and raspberry fruit with ripe tannins and a wave of refreshing acidity             | 5.50 | 7.50 | 22.00 |
| 305 | PORTMEIRION Merlot, IGP, 14%, Pays d'Oc<br>Gwin cydnerth, melfedaidd gydag aroglau cain o fwyar duon a blas ceirios ac eirin duon aeddfed<br>A soft, rich wine with elegant blackberry aromas leading to typical Merlot plum, cherry and dark fruit notes                        | 5.50 | 7.50 | 22.00 |
| 306 | PORTMEIRION Rioja, Bodegas del medievo, 13%, Ebro<br>Rioja gloyw rhuddgoch yfadwy, llawn blas aeron cochion aeddfed sbeislyd gydag arlliw o flas licris.<br>A bright cherry red colour with flavours of red berry fruits, spice & a hint of liquorice in an easy drinking style. | 6.50 | 9.00 | 26.00 |
| 307 | PORTMEIRION Pinot Noir, IGP, 12.5%, Pays d'Oc<br>Gwin cytbwys a sidanaidd gydag aroglau ceirios a ffrwythau cochion, adfflas tanin amheuthun<br>A smooth, well balanced Pinot Noir with red fruit aromas & cherry notes; lingering tannins on the finish                         | 6.50 | 9.00 | 26.00 |
| 308 | Argento Seleccion Malbec, 13.5%, yr Ariannin<br>Dyma win Malbec arbennig gydag aroglau dwys o geirios duon a nodau siocled<br>A superb Malbec with concentrated aromas of black cherries and chocolate notes.  |      |      | 29.00 |

Gwinoedd fesul gwydraid ar gael ar fesur 125ml os dymunir / All wines by the glass also available in 125ml measures if required



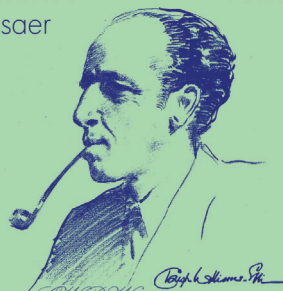
## Gwin Coch / Red Wine

175ml 250ml 750ml

- 309 Red Boar Bobal, Bodegas Gallegas, Galicia 22.00  
Llawn o fwyar duon a ffrwythau cochion, strwythur llyfn, gwin ysgafn a ffres o Galisia.  
Plenty of brambly, red fruits and a smooth texture. Light, fresh and fruity, a perfect sipping wine from Galicia.
- 310 Legato Nero d'Avalo IGT, Sicilia 22.00  
Aromâu llawn, cryf o sbeis a cheirios melys, yn llawn ffrwyth coeth, aeddfed tywyll gydag awch asidaidd.  
Great, intense aromas of sweet cherry & spice, filled with rich, ripe dark fruit with a bite of acidity.
- 311 Valdivieso Single Valley Lot Merlot, 13.5%, Chile 26.00  
Strwythur sidanaidd, gwin ffrwythlon llawn sbeis gyda nodau mwya duon ac arlliw o bupur du  
Rich, vibrant flavours and smooth, glossy texture, a rich, spicy wine with notes of blackberry and pepper
- 312 Clared PORTMEIRION House Claret, Ch.Haut-Gravelier, 12.5% 6.50 9.00 26.00  
Y Cabernet Franc a'r Merlot yn rhoi blas aeron duon aeddfed gyda chyffyrddiadau tanin ysgafn ar yr ôl-flas  
A Full bodied, juicy blend of Cabernet Franc/Merlot with ripe dark berry fruits & soft tannins on the finish
- 313 Le Fou Pinot Noir, Pays de l'Aude 26.00  
Pinot Noir nwyfus a suddlawn o ddyffryn yr Aude yn ne Languedoc, gwin llawn aeron melys gydag arlliw sawrus.  
Un-oaked, luscious, textural Pinot Noir from Languedoc displaying very intense, sweet berry fruit with savoury hints.
- 314 Gran Ducay Gran Reserva Tinto, Carinena, 12.5%, 2010 26.00  
Rhywiog, llyfn a ffrwythus gyda thanin derw sidanaidd a blas aeddfed sy'n nodweddiadol o'r Tempranilla hŷn.  
Rich and rounded in texture with ripe fruit and soft oaky tannins with a typical old Tempranillo mature flavour.
- 315 Domaine Chante Cigale 'The Cicada', Pays de Méditerranée 29.00  
80% Grenache ac 20% Carignan; naws mafon a cheirios gydag arlliw o sbeis. Asidedd da a thanin ystwyth.  
80% Grenache & 20% Carignan, raspberry fruits on the nose, flavours of ripe cherry, a touch of spice.
- 316 Domaine Belles Granges Syrah, Pays des Collines Rhodaniennes 29.00  
Gwnaed o 100% Syrah gan arddel naws Crozes-Hermitage ifanc: aroglau mwya duon ac eirin aeddfed  
100% Syrah with the style of a junior Crozes-Hermitage: dark and youthful aromas of bramble and ripe plum.

Chwerw'r  
Pensaer

Architect's  
Bitter



CWRW  
PORTMEIRION

500 ml e

Alc 4.6% vol

Chwerw'r Pensaer  
Cwrw Chwerw Cymru

Cwrw tywyllach na chwerw arferol a'i gydbwysedd o ran haidd a hopys yn rhoi iddo nawsg gadarn a ffrwthus.

Carbonadwyd yn y botel. Yfwch yn gyfrifol. Mae ynddo wenith a haidd.

Architect's Bitter  
Fine Welsh Ale

Slightly darker than traditional bitter with well balanced barley and hops producing a full bodied dark, fruity ale.

Bottle conditioned beer. Please drink responsibly. Contains wheat & barley.

500 ml e

Alc 4.6% vol

Cwrw Du  
Rhif 6

No. 6  
Dark Ale



500 ml e

Alc 5.5% vol

Cwrw Du Rhif 6  
Cwrw Tywyll Cymru

Cwrw tywyll, dwys heb fod yn rhy felys, nawsg siocled llosg wedi'i gydbwyso â blas hopys. Cwrw chwech seren.

Carbonadwyd yn y botel. Yfwch yn gyfrifol. Mae ynddo wenith a haidd.

No. 6 Dark Ale  
Fine Welsh Ale

Deep, dark ale, not too sweet, imbued with burnt chocolaty flavours balanced with hops. It's got your number.

Bottle conditioned beer. Please drink responsibly. Contains wheat & barley.

500 ml e

Alc 5.5% vol

## CWRW PORTMEIRION



*Daugh & Williams - Pfi*

Cwrw Ysgafn  
y Cwch Cerrig

Stone Boat  
Light Ale



CWRW  
PORTMEIRION

500 ml e

Alc 3.7% vol

Cwrw Ysgafn y Cwch Cerrig  
Cwrw Ysgafn Cymru

Cwrw seswn ysgafn gyda swigod mân ar ei ben. Blas sitrws a blas y brag yn cyfuno'n dda ac yn rhoi diweddglo hir.

Carbonadwyd yn y botel. Yfwch yn gyfrifol. Mae ynddo wenith a haidd.

Stone Boat Light Ale  
Fine Welsh Ale

A light golden session ale with a white lacy head. Citrus taste balanced with biscuity malt and a long finish.

Bottle conditioned beer. Please drink responsibly. Contains wheat & barley.

500 ml e

Alc 3.7% vol

Cwrw Aur  
y Pentre

Village  
Golden Bitter



CWRW  
PORTMEIRION

500 ml e

Alc 4.3% vol

Cwrw Aur y Pentre  
Cwrw Chwerw Cymru

Chwerw aur gyda swigod mân ar ei ben. Blas grawnffrwyth a lemnw a'r brag yn rhoi arlliw o flas bisgedi.

Carbonadwyd yn y botel. Yfwch yn gyfrifol. Mae ynddo wenith a haidd.

Village Golden Bitter  
Fine Welsh Ale

Golden orange with a white lacy head. Grapefruit & lemon taste balanced with biscuity malt and a long fruity finish.

Bottle conditioned beer. Please drink responsibly. Contains wheat & barley.

500 ml e

Alc 4.3% vol

## Cwrw a Seidr Casgen / Draught Beers & Cidre

	280ml	560ml
Lager Prava Lager	2.50	5.00
Guinness	2.50	5.00
Cwrw Chwerw IPA Felinfoel Welsh Bitter	2.00	3.90
Lager Wrecsam / Wrexham Lager	2.40	4.60
Seidr Casgen Portmeirion Draught Cider	2.00	3.90

## Cwrw Potel Cymreig / Welsh Bottled Beer

500ml

Chwerw PORTMEIRION Architect's Bitter, 4.6%, Nant Conwy 4.50

Tywyll a blasus, yr haidd a'r hopys yn rhoi naws ffrwythus.

Full bodied fruity ale, darker than traditional bitter, with well balanced barley & hops.

Cwrw Du PORTMEIRION Dark Ale No 6, 5.5%, Nant Conwy 4.50

Cwrw dwys heb fod yn rhy felys, naws siocled â blas hopys.

Deep, dark ale, not too sweet, imbued with burnt chocolaty flavours balanced with hops

Cwrw Ysgafn PORTMEIRION Light Ale, 3.7%, Nant Conwy 4.50

Cwrw sesiwn gyda blas sitrws a'r brag yn rhoi diweddglu hir.

A light golden session ale with a white lacy head. Citrus taste balanced with biscuity malt

Chwerw Aur PORTMEIRION Golden Bitter, 4.3%, Nant Conwy 4.50

Blas grawnffrwyth a lemwn ac arlliw o flas bisgedi.

Golden orange with a white lacy head. Grapefruit & lemon balanced with biscuity malt

Tomos Watkins Magic Lager, 5%, Abertawe 5.00

Lagyr Cymreig clasurol, glân, rhagorol a llawn blas o fragdy Tomos Watkins yn Abertawe

Outstanding, classic, full flavoured and wonderfully clean finishing premium Welsh lager

Snowdon Craft Lager, 4.7%, Llandudno 5.50

Lagyr Bragdy'r Gogarth yw'r union beth i dorri syched ar ôl dringo i ben yr Wyddfa

Brewed with European noble hops for a clean, crisp, fresh flavour

## Seidr Potel Cymreig / Welsh Bottled Cider

500ml

Gwynt y Ddraig Orchard Gold, 4.9%, Pontypridd 5.50

Seidr traddodiadol gydag aroglau iachus ac amheuthun

Oak matured farmhouse cider, medium bodied with refreshing aroma & crisp sharpness

Tomos Watkin Taffy Apple Cider, 6%, Abertawe 568ml 5.50

Seidr Celtaidd cryf ac iachus a dyrr syched fel dilyw yn y anialwch

Strong Celtic Cider, thirst quenching and delicious with a rounded finish

## Diodydd Poeth / Hot Drinks

Cafetiere (i un/for one person)	2.80
Cafetiere (i ddau/for two persons)	4.60
Espresso	2.40
Espresso dwbl / Double espresso	3.40
Cappuccino	2.95
Latte	2.95
Americano	2.75
Siocled Poeth / Hot chocolate	3.00
Te neu de perlysiâu / Tea & herbal infusions	2.50
Coffi gwirodydd / Liqueur coffees	7.50

## Diodydd Oer / Cold Drinks

Cola / Diet Cola / Lemonade	2.50
J20 Afal a Mango / Apple & Mango	2.50
J20 Afal a Mafon / Apple & Raspberry	2.50
J20 Oren a Ffrwythau'r Dioddefaint / Orange & Passionfruit	2.50
Sudd oren ffres wedi ei wasgu / Fresh squeezed orange juice	2.50
Sudd afal / Apple juice	2.00
Sudd pîn afal / Pineapple juice	2.00
Sudd llugaeron / Cranberry juice	2.00
Sudd tomato / Tomato juice	2.00
Potelaid o ddŵr yr Wyddfa (750ml) Bottle of Snowdonia sparkling water (Pefriog neu lonydd) (Still or sparkling)	3.50